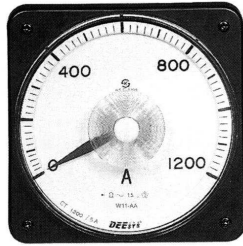


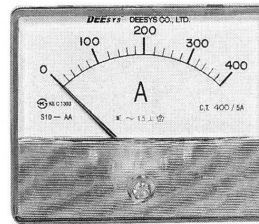
PANEL BOARD AMPEREMETER



"W" type



"S" type



Specification

Type	Size	Rating	Freq(Hz)	VA	Class	Weight(Kg)
W8-AA	80X80mm	5A	50/60	1.5	1.0 or 1.5	0.40
W8-AD		50mV	-	50mV Drop		
W11-AA	110X110mm	5A	50/60	1.5	1.0 or 1.5	0.52
W11-AD		50mV	-	50mV Drop		
S8-AA	80X80mm	5A	50/60	1.5	2.5	0.25
S8-AD		50mV	-	50mV Drop		
S10-AA	100X84mm	5A	50/60	1.5	1.5	0.27
S10-AD		50mV	-	50mV Drop		

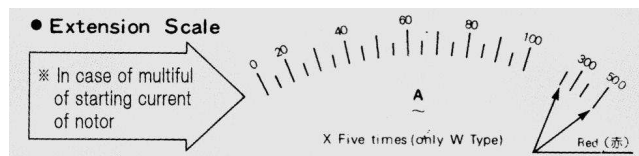
Characteristics

AC Amperemeter

1. Combine C,T of rating 2ry current 5A(1A) for meter if current of case it in over 5A
2. Combine P,T & C,T for meter in order to insulate the circuit if voltage of circuit over 500V and current of circuit is below 5A,
3. Select 150~500% over scale meter of rating current due to starting current of motor if it in for motor circuit,

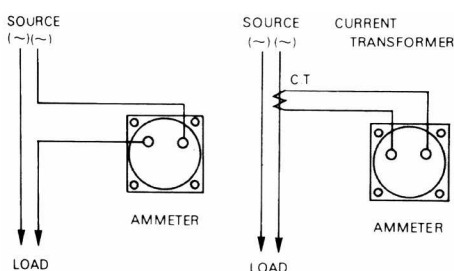
DC Amperemeter

1. In case of below 30A current, the shunt installed in the meter. But in case of over 30A current, the shunt in not installed in the meter, please connect the shunt (50mA) outside,
2. When you connect the shunt, connect the shunt on the minus side.



External connection diagram

AC Ammeter



DC Ammeter

