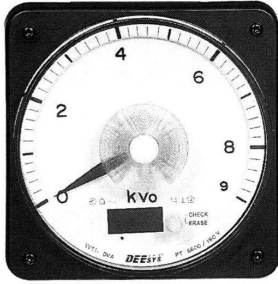


# PANEL BOARD MAXIMUM DEMAND METER(V<sub>0</sub>)



## Feature

The V<sub>0</sub> meter is an electronic type for demand V<sub>0</sub>, which is displayed by 3 digit FND window on the lower part of the meter with a mechanical type indicator for real time V<sub>0</sub> value. Comparing with mechanical type, the Electronic V<sub>0</sub> meter has no slip error against inertia moment of indicating needle set.

## Application

The V<sub>0</sub> meter is applied for detecting zero sequence voltage on the distribution line which has small ground current. As soon as one phase is grounded by fault, zero phase sequence voltage is generated. For this purpose, the meter would be connected with an Open-Delta circuit of 3 phase PT secondary.

## Description

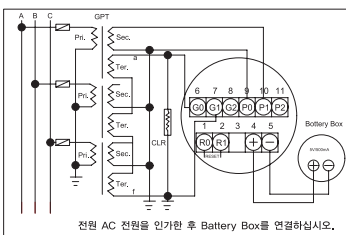
1. To connect a meter as shown below
2. To connect the meter with an external rechargeable battery
3. To energize source PT
4. The wide range analog indicator will indicate real time V<sub>0</sub> voltage. If any on the line, the indicating value will move according to real time line situation,
5. The demand value on the Display with 3 digit FND located lower part of the front plate of the meter, is shown a fixed

6. The Display is erased by pressing the reset button on the right side of the Display.
7. Demand display is designed to be indicated to be indicated for higher than 10V<sub>0</sub>.

## Specification

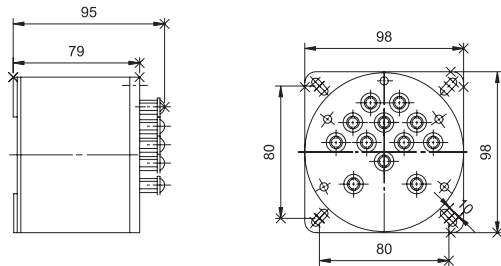
Item	Model	Rating(A)	Full Scale	Accuracy(%)	Aux.Power(AC)	Freq.(Hz)	Burden(VA)	Weight(Kg)
V <sub>0</sub> Meter	W11 DVA	110/190	150/259	Pointer:1.5 at FS Digit:3.0 at FS	110V/220V	60	0.5	1.0

## External connection diagram



G<sub>0</sub> G<sub>1</sub> : AC 110V  
 G<sub>0</sub> G<sub>2</sub> : AC 190V  
 P<sub>0</sub> P<sub>1</sub> : AC 110V  
 P<sub>0</sub> P<sub>2</sub> : AC 190V

## Dimension for External Power supply Box



## Dimension for Meter

