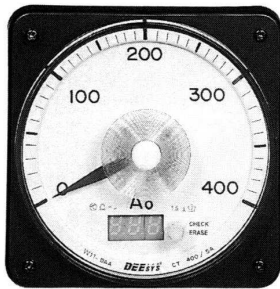


PANEL BOARD MAXIMUM DEMAND METER(A₀)



Feature

The Ao meter is an electronic type for demand Ao, which is displayed by a 3-digit FND window on the lower part of the meter with a mechanical type indicator for real-time Ao value. Comparing with a mechanical type, the Electronic Ao meter has no slip error against the inertia moment of the indicating needle set.

Application

The Io meter is applied for detecting zero sequence current on the distribution live which is grounded solidly or with resistance. As soon as one phase is grounded by fault, zero phase sequence current is generated. For the purpose, the meter would be connected with a ZCT or neutral line of a 3 CT connection.

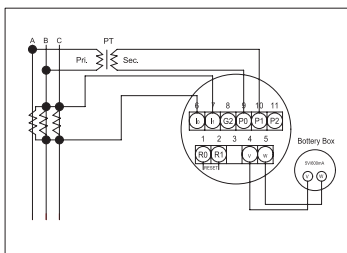
Description

- To connect a meter as shown below.
- To connect the meter with an external rechargeable battery.
- To be flow unbalanced current at the relay terminal as per the below diagram.
- The wide range analog indicator will indicate real-time Io current. The indicating value will move according to real-time unbalanced line current.
- The demand value on the display with 3-digit FND located on the lower part of the front plate of the meter, shows a fixed peak value. The value is stored in an EEPROM in the meter. Whenever a new peak value is generated, the value is renewed instead of the old data.
- The display is erased by pressing the reset button on the right side of the display.

Specification

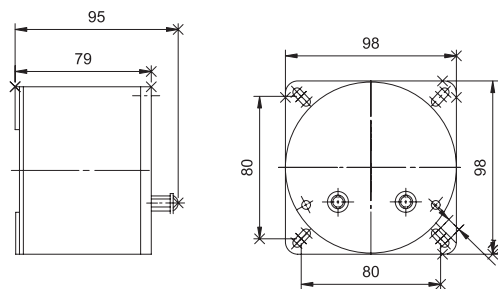
| Item | Model | Rating(A) | Full Scall(A) | Accuracy(%) | Aux.Power(AC/DC) | Freq.(Hz) | Burden(VA) | Weight(Kg) |
|----------|---------|-----------|---------------|--------------------------------------|------------------|-----------|------------|------------|
| Ao Meter | W11 DAA | 1 or 5 | 1 or 5 | Pointer:1.5 at FS Digit:3.0 at FS | 110V | 60 | 0.5 | 1.0 |

External connection diagram



P₀ P₁ : AC 110V
P₀ P₂ : AC 190V

Dimension for External Power supply Box



Dimension for Meter

