

Low Voltage Zero-Phase Sequence Current Transformer

Zero Phase Sequence Current Transformer [DZR, ZR, ZS, SZR-Series]

Cable & Bus Bar Through [DZR, ZR, ZS, SZR-Series]

How to Installation and Inspection

ZCT (DZR, ZR, ZS, SZR)

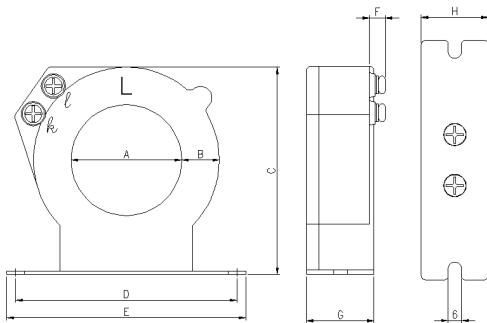


Zero phase sequence Current Transformer [Round Series]

Specification

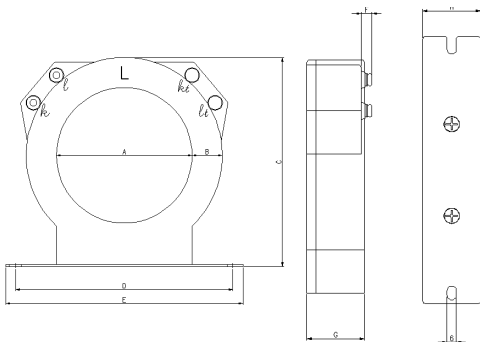
Model	Rated Current	Inside Dia.	Zero Phase Current Ratio	Max. Weight
DZR-030	100A	30 \varnothing	200mA / 100mV (75 ~ 125mV at 2k Ω)	0.2Kg
DZR-050	250A	50 \varnothing		0.3Kg
DZR-065	400A	65 \varnothing		0.4Kg
DZR-080	600A	80 \varnothing		0.8Kg
DZR-100	800A	100 \varnothing		1.0Kg
DZR-120	1000A	120 \varnothing		1.2Kg

Dimension



Unit : m/m

Model	A	B	C	D	E	F	G	H
DZR-030	30	17	74	75	85	7	23	25
DZR-050	50	17	94	100	108	7	30	30
DZR-065	65	17	109	100	108	7	30	30



Unit : m/m

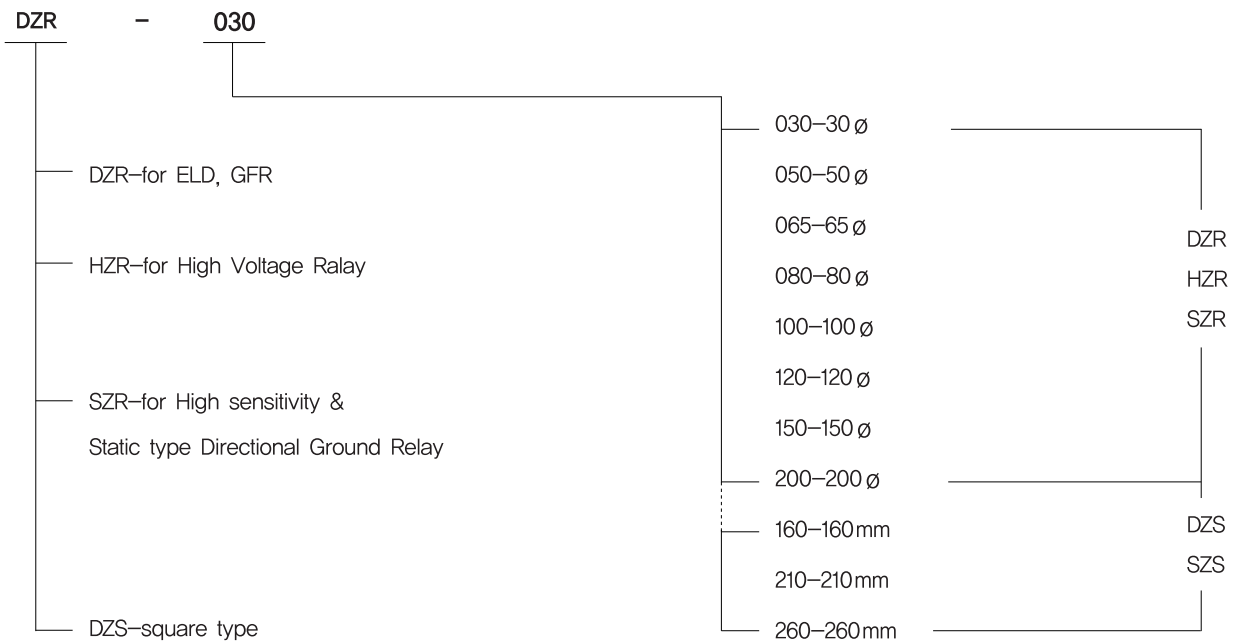
Model	A	B	C	D	E	F	G	H
DZR-080	80	23	133	114	132	7	38	38
DZR-100	100	23	155	160	175	7	38	38
DZR-125	120	23	175	160	175	7	38	38

ZERO-PHASE SEQUENCE CURRENT TRANSFORMER [ZR, ZS, SZR-SERIES]



- As it is used high magnetivity core, it has high linear characteristics and safety characteristics.
- As SZR type ZCT (Sensitivity type) is used Nickel core, it is possible to detect small current(30mA) correctly
- As various model, it is very easy to select the ZCT

Ordering Procedure



※ Note : Because the above ZCT is voltage type on 2ry output and has characteristics applicable with ELD and static type relay, it is impossible to apply for induction type relay.

ZERO-PHASE SEQUENCE CURRENT TRANSFORMER [ZR, ZS, SZR-SERIES]



- For earth leakage detector
- For indoor
- Cable & Busbar through type
- Casing ABS (Non-flammable)
- Color : Black (N1,5)

(Type approval by inspection agency for fire)

Specification

	Model	Rated Current(A)	Inside dia. (mm)	Through wire (EV)mm ²			Zero phasecurrent ratio Pri./Sec	Weight (kg)
				1∅2W	1∅3W, 3∅3W	3∅4W		
Cable Through Type	DZR-030/SZR-030	100	30	60	14	8	ZR,ZS type 200mA/100mV (75~125mV at 2kΩ)	0,5
	DZR-050/SZR-050	250	50	150	80	38		0,7
	DZR-065/SZR-065	400	65	325	150	100		0,9
	DZR-080/SZR-080	600	80	400	250	2000		1/5
	DZR-100/ SZR-100	800	100	500	325	250	SZR Type 30mA/50mV	2,2
	DZR-120/ SZR-120	1000	120	—	850	725		3,4
	ZR-150/ SZR-150	1400	150	—	1000	850		4,0
	ZR-200/ SZR-200	2000	200	—				7,5
Busbar through type	DZS-160	400	30x160		※ 6Tx25		30mA/50mV	2,8
	DZS-210	500	30x210	—	※ 6Tx25			3,5
	DZS-260	600	30x260	—	※ 6Tx25			3,8

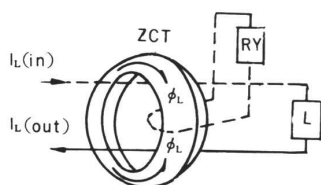
※Note : “※” Mark is busbar size

- Use to Temperature : -10°C~+60°C
- Wrthstand voltage : AC 2000V/Min,(between secondary coil and base)
- Insulation resistance : More Then 1000MΩ DC 500V(between coil and base)

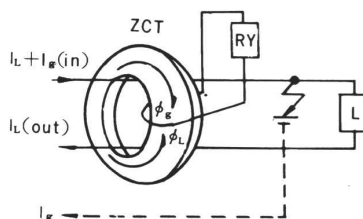
Through wire (EV)mm ²	
DGR	200mA/100mV
DER-Po3	30mA/50mV

Z.C.T

(1) Normal Condition



(2) Ground Fault Condition



ZERO-PHASE CURRENT TRANSFORMER (CURRENT OUTPUT TYPE)



Features

- Terminal cover for safety
- Easy to install this types to panel by structural improvement
- Various structures by types of load and capacity
- ABS Non Flammable resin for self-extinguish stability

Specification

PART	RATING
Output condition	AC 200mA / 1,5mA
Operating scale	90 ~ 110%
Rated Frequency	50 / 60 Hz
Max. Voltage	AC 600V
Operating temperature	-10°C ~ 60°C
Insulation resistance	1st-Panel DC500V Megger 100M Ω above
	1st-2st DC500V Megger 100M Ω above
Insulation Patience	1st-Panel AC1,500V/1sec above
	1st-2st AC1,500V/1sec above
	2st - Panel AC500V/1sec above
Impulse voltage	1st - Panel 6kV (1,2/50 μ s) +, - 1sec

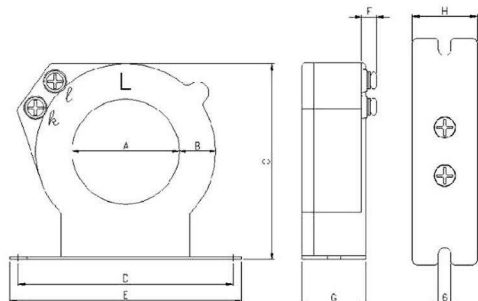
Model / Standard

Round Type	Rated Current(A)	Inside Dia.(ϕ)	Square Type	Rated Current(A)	Inside Dia.(mm)
DZR-A030	100	30	DZS-A160	400	30X166
DZR-A050	250	50	DZS-A210	500	30X210
DZR-A065	400	65	DZS-A260	600	30X266
DZR-A080	600	80			
DZR-A100	800	100			
DZR-A120	1000	120			

ZERO-PHASE CURRENT TRANSFORMER (CURRENT OUTPUT TYPE)

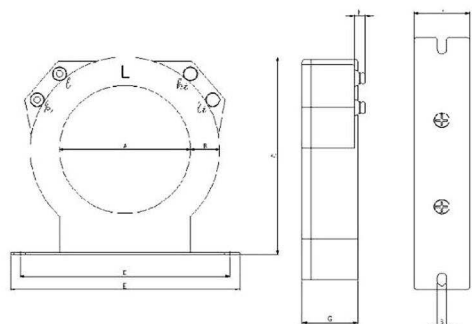
Dimension

• Round Type



Unit : m/m

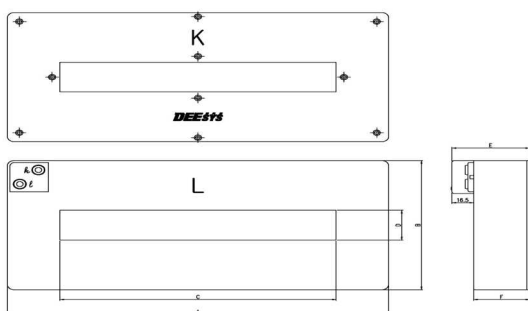
Model	A	B	C	D	E	F	G	H
DZR-A030	30	17	74	75	85	7	23	25
DZR-A050	50	17	94	100	108	7	30	30
DZR-A065	65	17	109	100	108	7	30	30



Unit : m/m

Model	A	B	C	D	E	F	G	H
DZR-A080	80	23	133	114	132	7	38	38
DZR-A100	100	23	155	160	175	7	38	38
DZR-A120	120	23	175	160	175	7	38	38

• Square Type



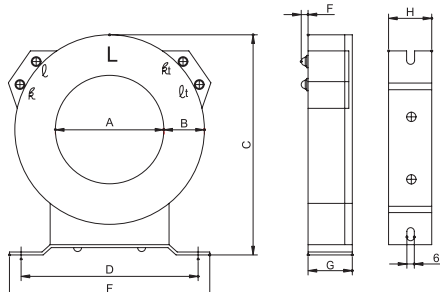
Specification & Dimension

Model	Rating Current	Inside Dia.	A	B	C	D	E	weight(kg)
DZS-A160	400A	30 X 166	240		166		52	1.6
DZS-A210	500A	30 X 210	290	130	210	30	62	2.1
DZS-A260	600A	30 X 266	350		266			2.6

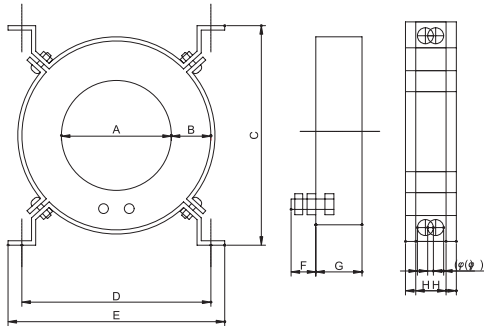
UNIT(m/m)

CABLE BUSBAR THROUGH(ZR,SZR,ZS-SERIES)

• Round type

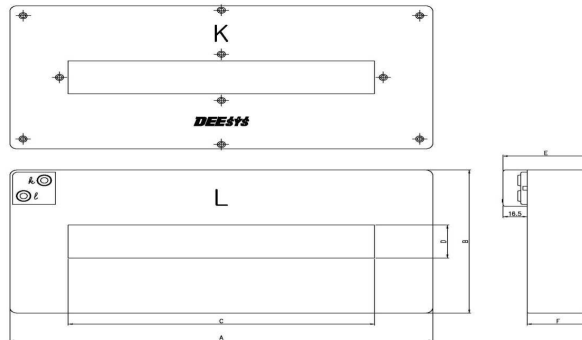


Model-No	UNIT(m/m)							
	A	B	C	D	E	F	G	H
ZR/SZR-025	25	25	87	95	110	9	30	20
ZR/SZR/HZR-030	30	25	108	100	114	7	32	32
ZR/SZR/HZR-050	50	25	131	110	133	7	39	36
ZR/SZR/HZR-065	65	26	143	110	133	7	39	36
ZR/SZR/HZR-080	80	34	174	160	180	7	40	40
ZR/SZR/HZR-100	100	38	203	160	180	7	40	40



Model-No	UNIT(m/m)								Hole(∅)
	A	B	C	D	E	F	G	H	
ZR/HZR-120	120	45	225	180	210	20	55	35	10
ZR/HZR-150	150	45	260	180	210	20	55	35	10
ZR/HZR-200	200	53	310	260	286	10	70	35	10

• Square type



Model-No	Rating Current	Inside Dia.	A	B	C	D	E	weight(kg)
DZS-150	400A	30 X 166	240		166		52	1,6
DZS-200	500A	30 X 210	290	130	210	30	62	2,1
DZS-250	600A	30 X 266	350		266			2,6

UNIT(m/m)